

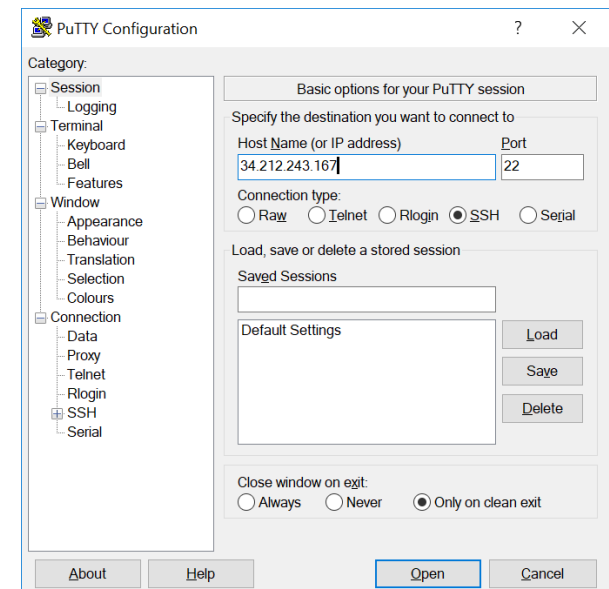
During Break – Log into AWI for the Next Session



- **Windows** – Open PUTTY or other terminal program
 - Enter 34.212.243.167 into hostname
 - **MAC** –
 - Open Terminal (can find by searching for “terminal”)
 - Log into workshop Amazon Web Instance using your username and password
- \$ ssh topmed_##@34.212.243.167**

You will be prompted for your password, e.g. Topmed_## (Note capitalization).

If it asks you any long questions about whether you really want to do this, answer ‘yes’



Also open a web browser and log into dnanexus.com using your same credentials

Analysis Commons

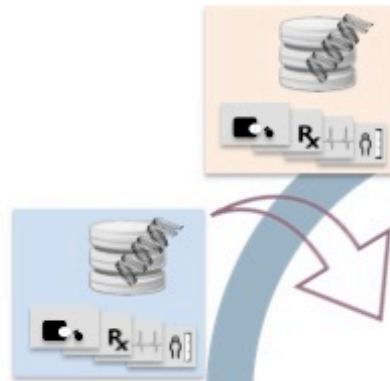
Collaborative Cloud Computing for TOPMed

Jennifer Brody





CONTRIBUTING STUDIES



WEB/COMMANDLINE
ANALYTIC INTERFACES
FOR MULTIPLE USERS



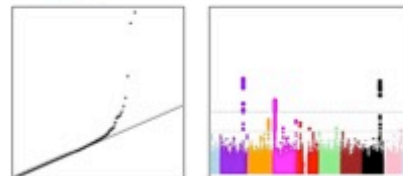
MULTIPLE ANALYTIC
PIPELINES

POOLED GENETIC DATA



HARMONIZED PHENOTYPES

METHODS
DEVELOPMENT
ACCESS



DISCOVERY RESULTS

Applications



- Phenotype descriptives
- Annotation



- GENESIS
- MMAP
- EFACTS
- seqMeta/
fastSKAT



- QQ plots
- Manhattan
- Regional Association

- Single-variant
- SKAT
- Burden

- Continuous
- Dichotomous
- LMM

- Conditional

Analysis Commons Access



- Authorization is tied to TOPMed is dbGAP applications
- dbGaP application must contains certain language specific to the Commons
- Detailed instructions are available: <https://analysiscommons.com>
- Additional TOPMed info with links to App documentation: <https://sites.google.com/chargeconsortium.com/analysiscommons>
- Contact Commons Gatekeeper for questions about submitting application and getting access: acadmin@uw.edu

Analysis Commons Conference Calls



- Analysis & Bioinformatic calls led by Adrienne Cupples, 1st & 3rd Tuesdays @ 12 PT
- App Development calls led by Jen Brody for those interesting in writing their own, Apps 2nd & 4th Thursdays @ 11 PT
- Email Adrienne or Jen about joining adrienne@bu.edu or jeco@uw.edu either call